

# Gallery 4

## Element 6: Floor printed map to show the fault lines on the Gujarat map

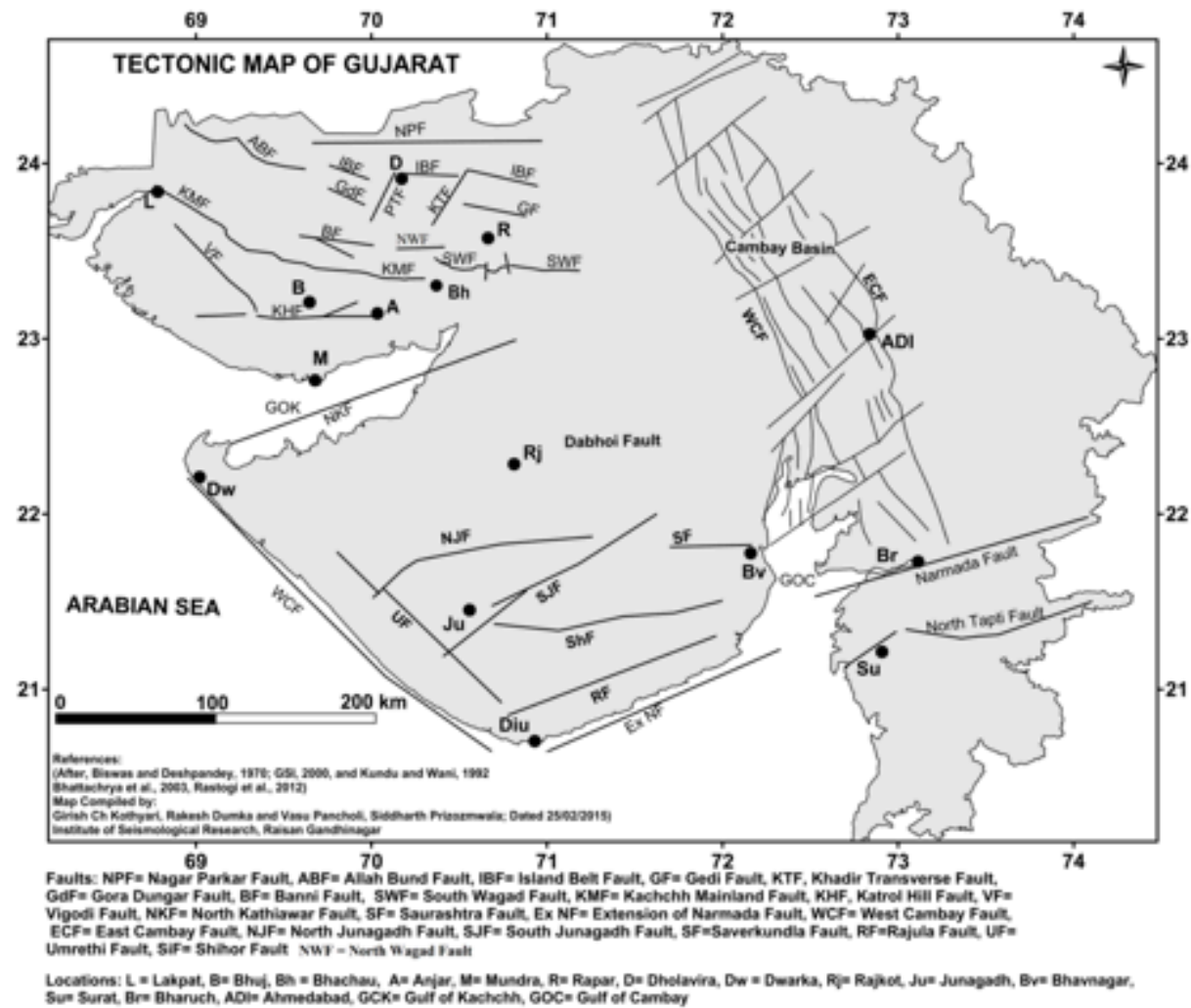


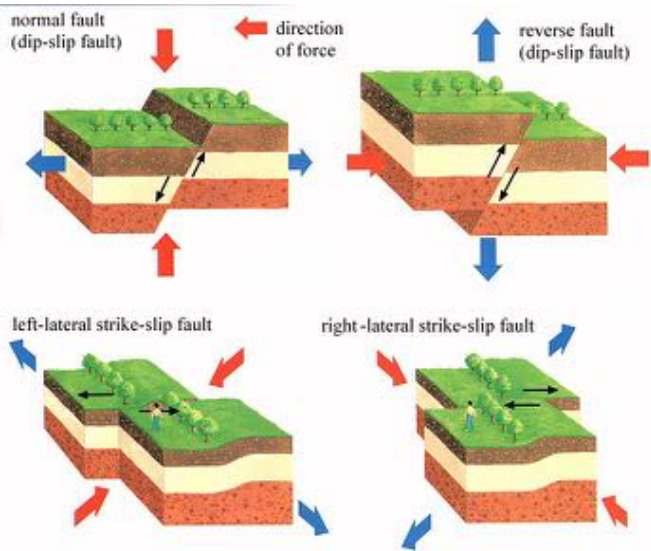
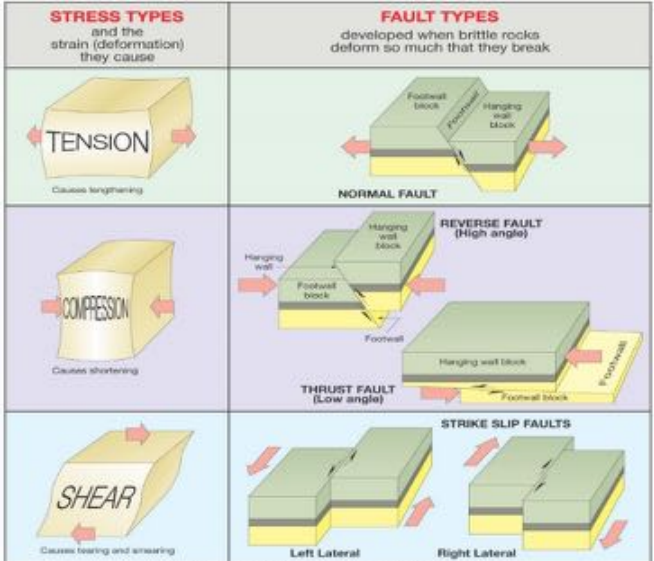
Figure 2.3: Map of Tectonic features of Gujarat (Faults shown within Saurashtra are not proven ones, Cambay basin extends northwestwards into Rajasthan).





# Gallery 4

## Element 7: Interactive models explaining the different 3-4 types of earthquakes and the science behind



## Gallery 4

**Element 8:** Interactive wall with simple questions related to the theme of the museum, that the visitors answer through simple non-digital interactions. This will eventually build up a wall with live data.

The questions will be like:

Have you ever experienced an earthquake?

What were you doing during the 2001 earthquake?



## **Zone 3: Memorial Block**



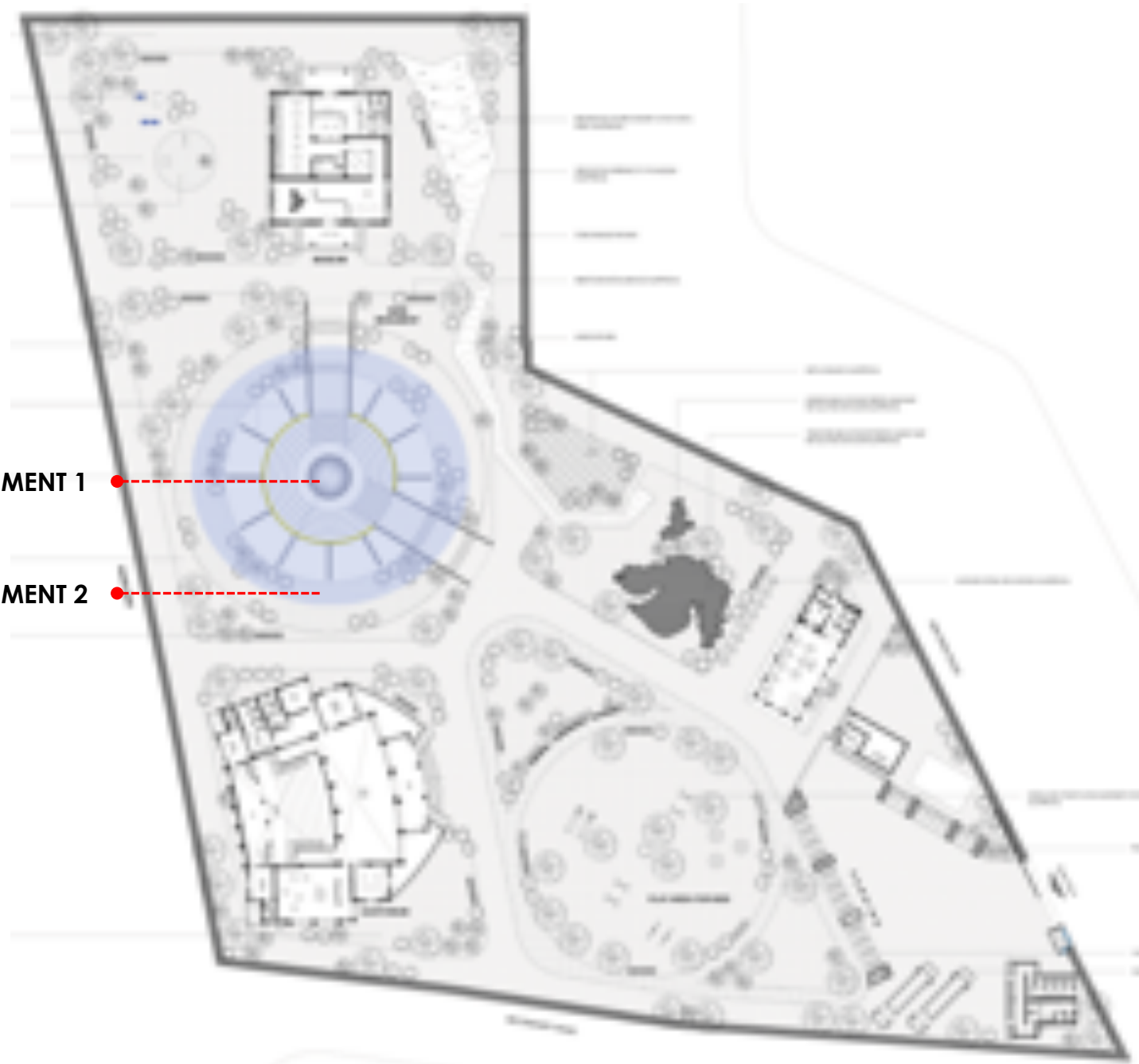
## Zone 3: Memorial Block

Element 1: Central reflective Installation

Element 2: Memorial Wall

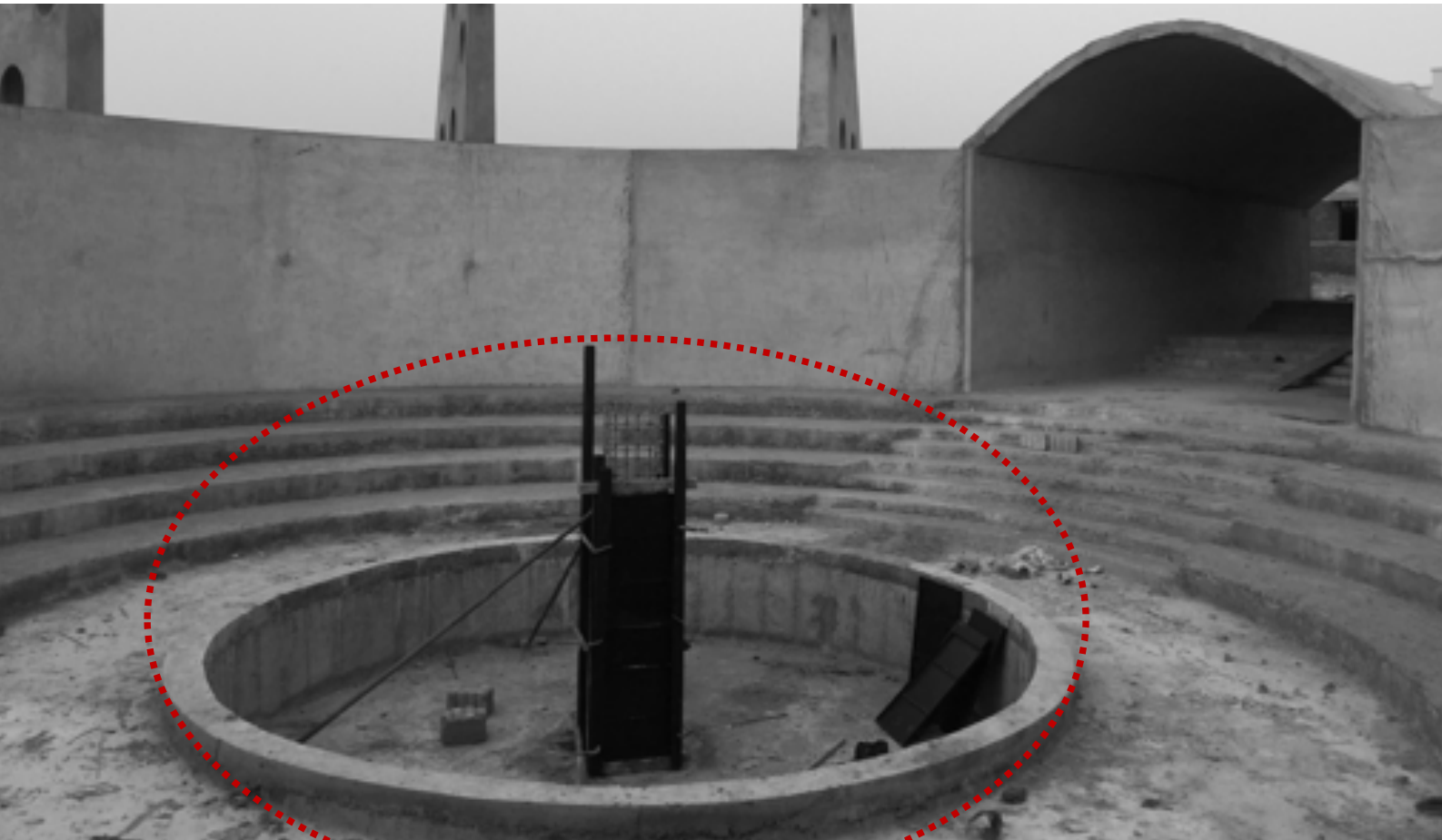
ELEMENT 1

ELEMENT 2



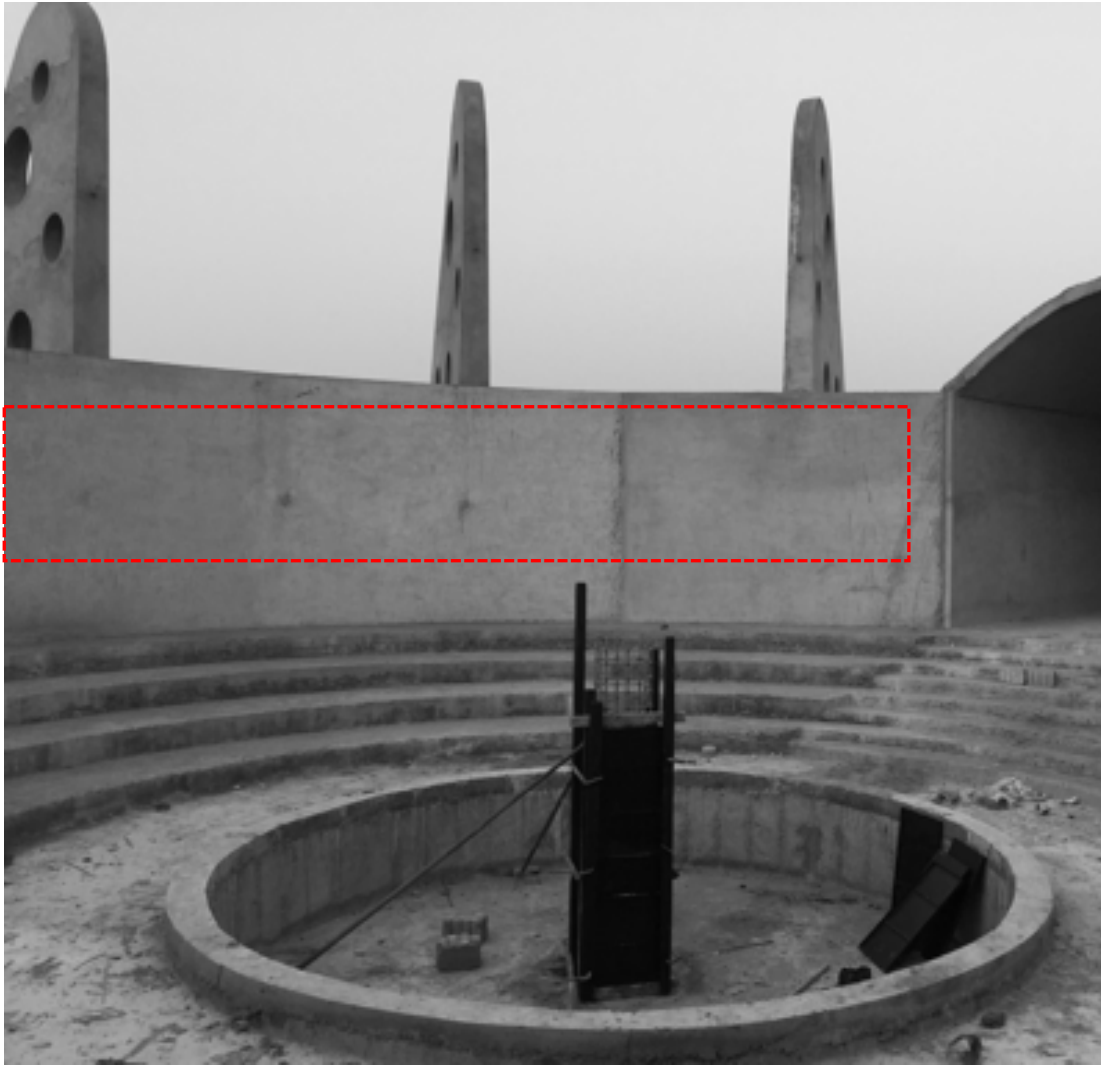
## Element 1: Central Reflective Installation

Reflective convex surface at the center of the open air theatre of around 2m diameter.



## Element 2: Memorial Wall

Memorial wall with pictures of people who lost their life during the earthquake.



## **Zone 4: Community Space**



## Zone 4: Community Space

Part 1: Auditorium block play area

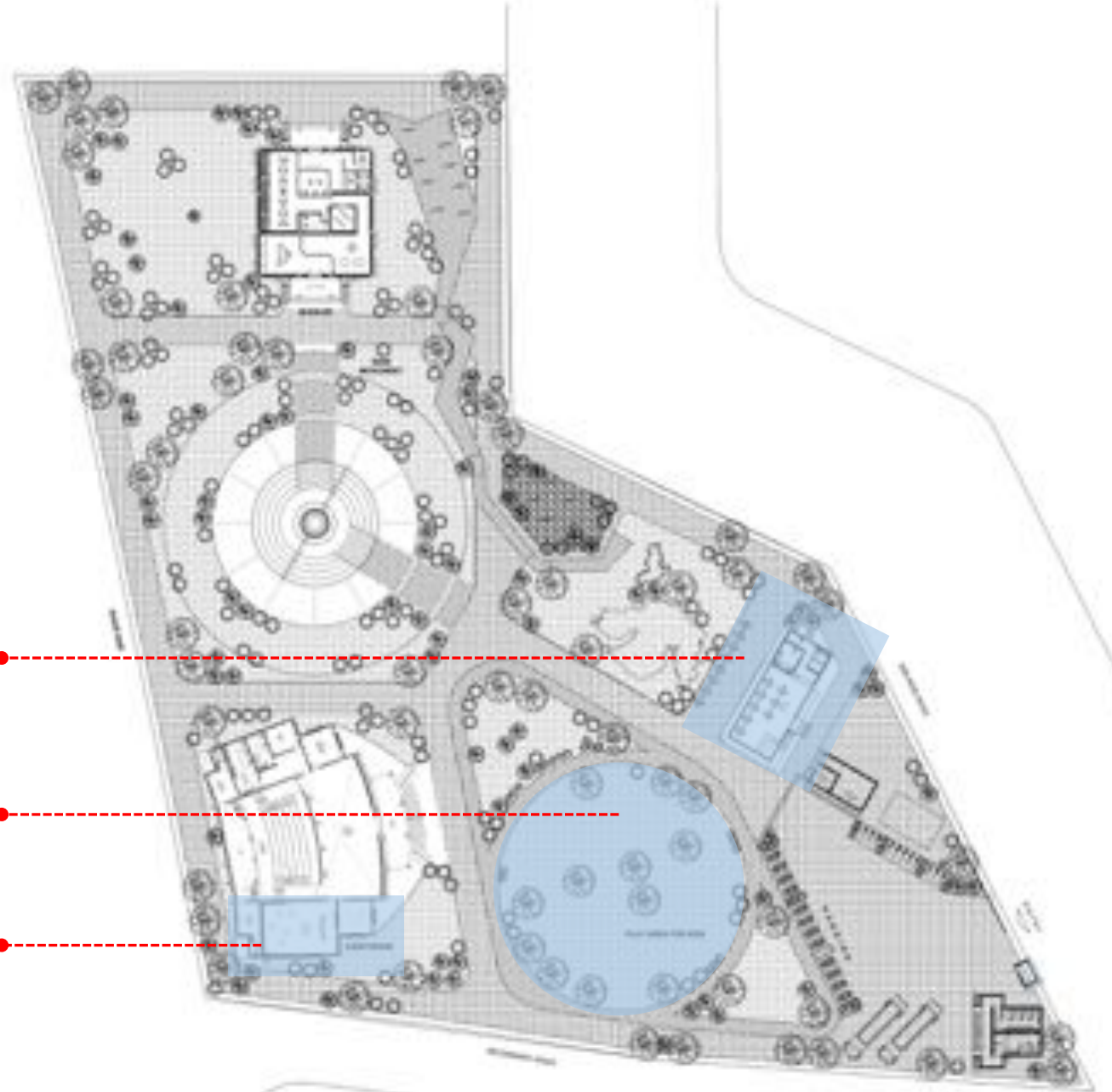
Part 2: Café

Part 3: Play area

**PART 2**

**PART 3**

**PART 1**



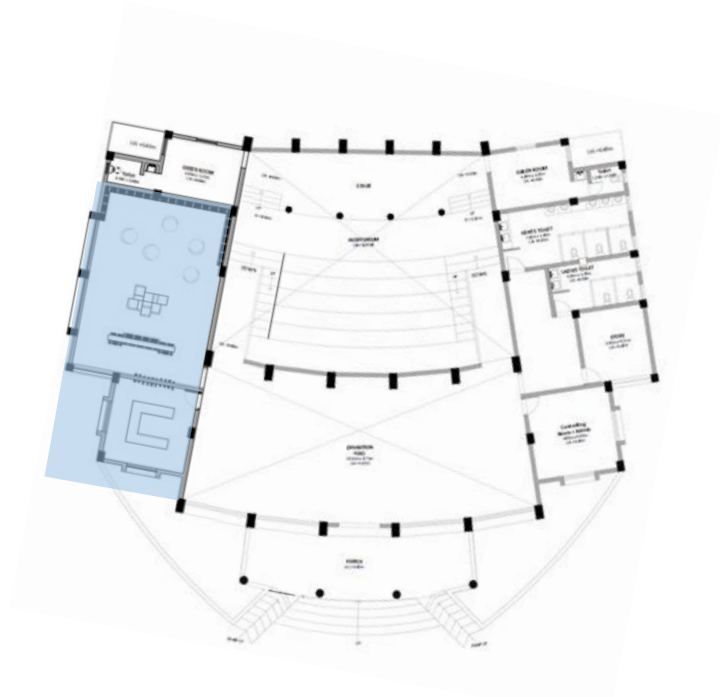
# Part 1: Auditorium Block play area

Element 1: Library

Element 2: Large scale Jenga

Element 3: Pushpin Wall

Element 4: Drawing table and Pin board



Element 1



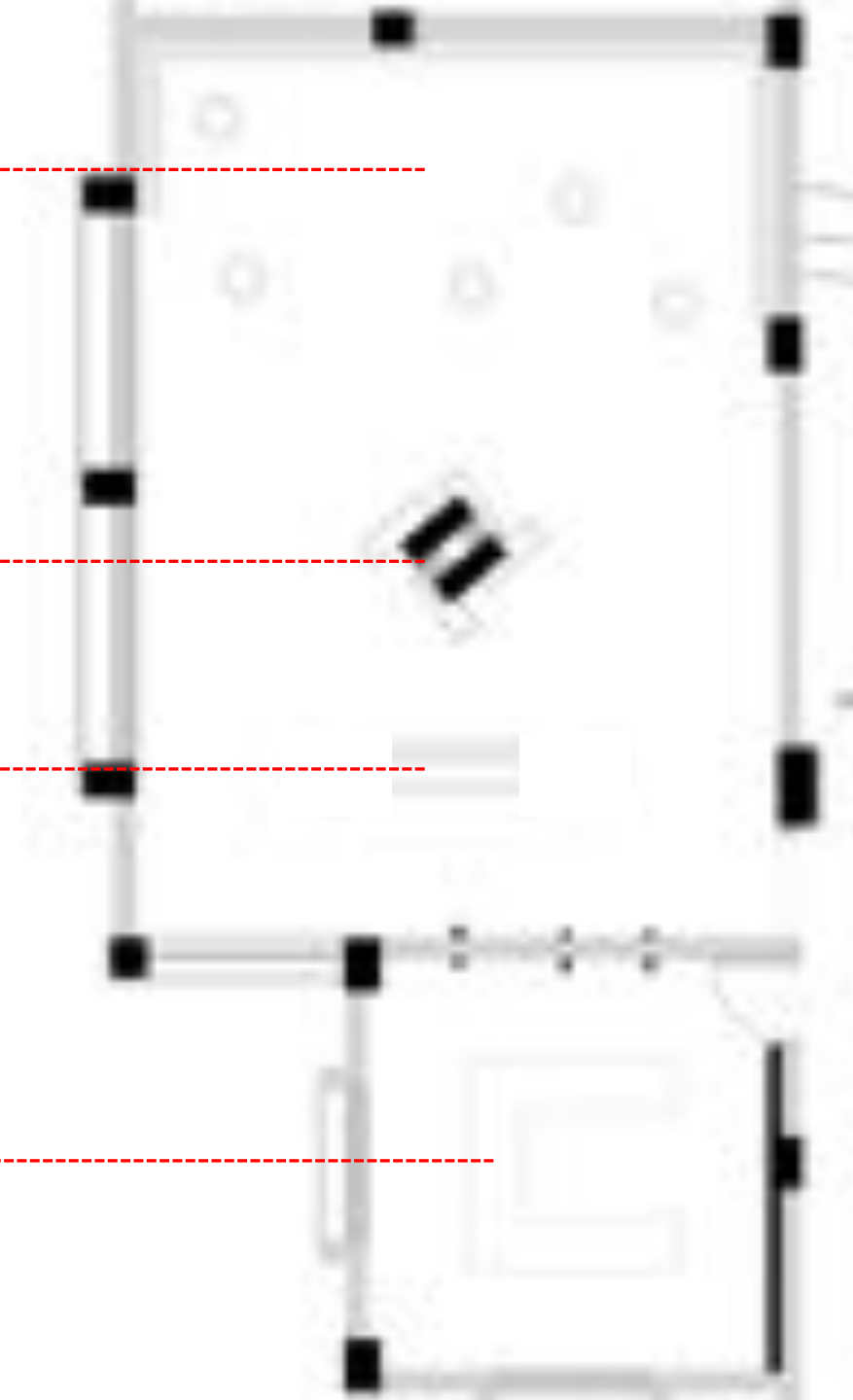
Element 2



Element 3

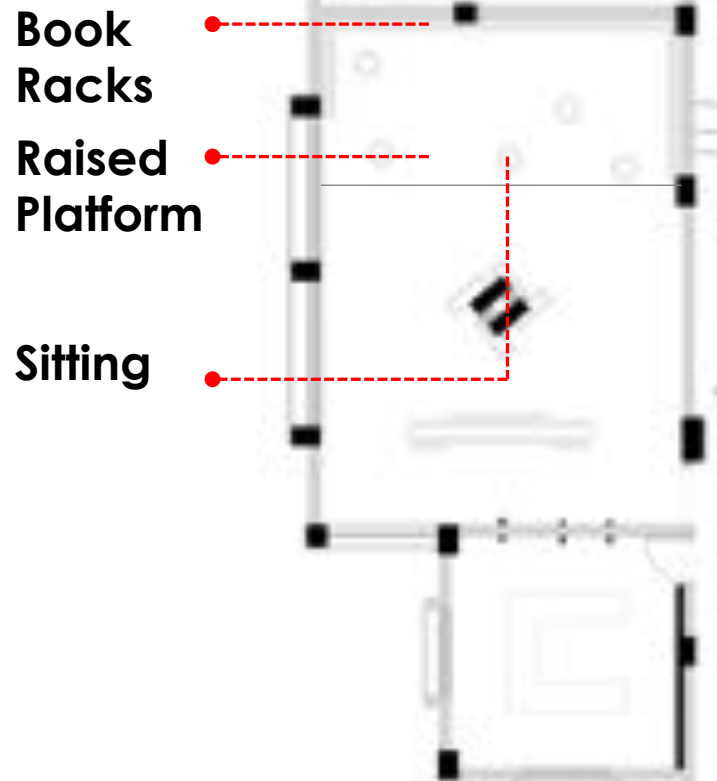


Element 4



## Element 1: Library

The casual reading space with a raised platform, sitting and stools will allow the children to immerse themselves in the books that the library curates





## Element 2: large scale Jenga

The large scale Jenga game is an interactive game that will make the children understand the value of balance and technique in a pressure situation



### Element 3: Push pin wall

The everchanging wall invites the children to interact with the wall making various forms. Through the interaction children learn that nothing is constant and the importance of adaptation.



## Element 4: Drawing Table and

### Pin board

Table for children to draw and a wall to showcase those drawings.





## Part 2: cafeteria

Cafeteria with indoor and outdoor sitting

